

COMMONWEALTH OF PENNSYLVANIA DEPARTMENT OF MILITARY AND VETERANS' AFFAIRS

ANNVILLE, PENNSYLVANIA

JOSH SHAPIRO, GOVERNOR

MAJOR GENERAL MARK J. SHINDLER, THE ADJUTANT GENERAL

PROJECT NO.: 42220144

RANGE ROAD REPAVING PHASE 1

UNION TOWNSHIP, LEBANON COUNTY, PENNSYLVANIA

DESIGN PROFESSIONALS:
OFFICE OF FACILITIES AND ENGINEERING
BUREAU OF DESIGN AND PROJECT MANAGEMENT
BUILDING 0-10, CHAPEL ROAD, FORT INDIANTOWN GAP
ANNVILLE, LEBANON COUNTY, PENNSYLVANIA

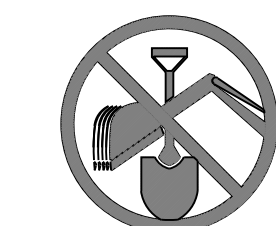
INDEX TO DRAWINGS

G.1.1 COVER SHEET
C.1.0 SITE PLAN
C.2.1 DETAILS

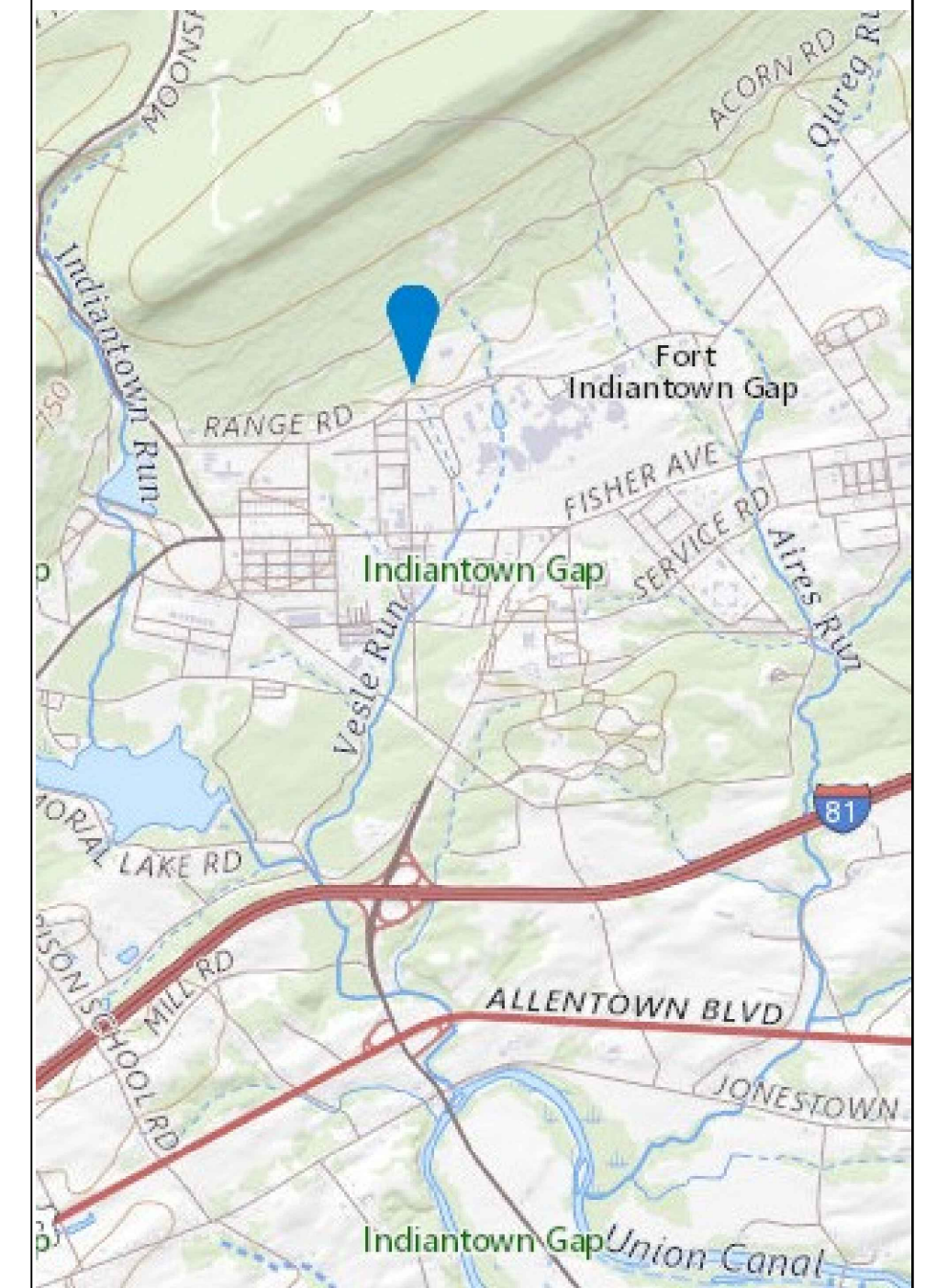
GENERAL NOTES

1. THE CONTRACTOR IS REQUIRED TO SUBMIT A REQUEST FOR A DIGGING PERMIT, THROUGH THE DIVISION OF INSTALLATION MANAGEMENT (DIM), BUILDING 11-64, 10 DAYS PRIOR TO CONSTRUCTION. IT IS THE RESPONSIBILITY OF THE CONTRACTOR TO VERIFY ALL UTILITY LOCATIONS PRIOR TO THE START OF WORK AND INCLUDE THESE MARKING LOCATIONS ON THE AS-BUILT DRAWINGS. THE CONTRACTOR WILL COORDINATE WITH THE DIM (BLDG. 11-64) IN THE VERIFICATION OF THE EXISTING UTILITIES.
2. THE CONTRACTOR WILL PROVIDE 3 DAY NOTICE PRIOR TO ALL UTILITY CONNECTIONS. THE CONTRACTOR WILL NOTIFY DIM UPON COMPLETION OF THE CONNECTIONS, BUT PRIOR TO BACKFILLING. THE CONTRACTOR WILL NOT BACKFILL ANY UTILITY CONNECTIONS UNTIL DIM INSPECTS AND APPROVES THE WORK.
3. DRAWING PREPARED FROM PLAN BY GANFLEC ARCHITECTS AND ENGINEERS AND BRINJAC ENGINEERING INC DATED 20 AUGUST 2002.
4. IT WILL BE THE RESPONSIBILITY OF THE CONTRACTOR TO VERIFY EXISTING GRADES AND SURVEY/LAYOUT OF NEW ROAD CONSTRUCTION.

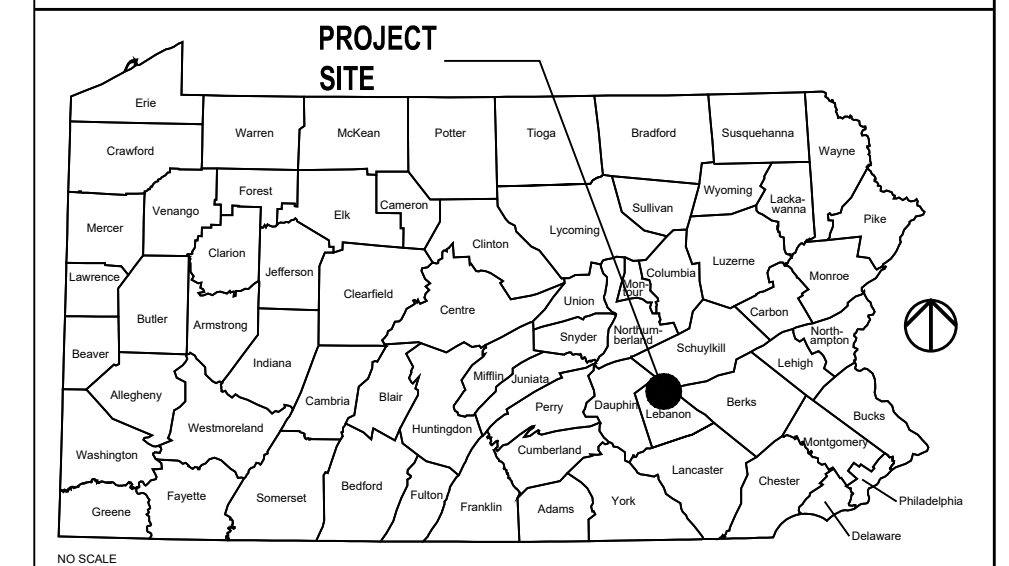
CALL BEFORE YOU DIG!
PENNSYLVANIA LAW REQUIRES
3 WORKING DAYS NOTICE FOR
CONSTRUCTION PHASE AND 10 WORKING
DAYS IN DESIGN STAGE - STOP CALL
Pennsylvania One Call System, Inc



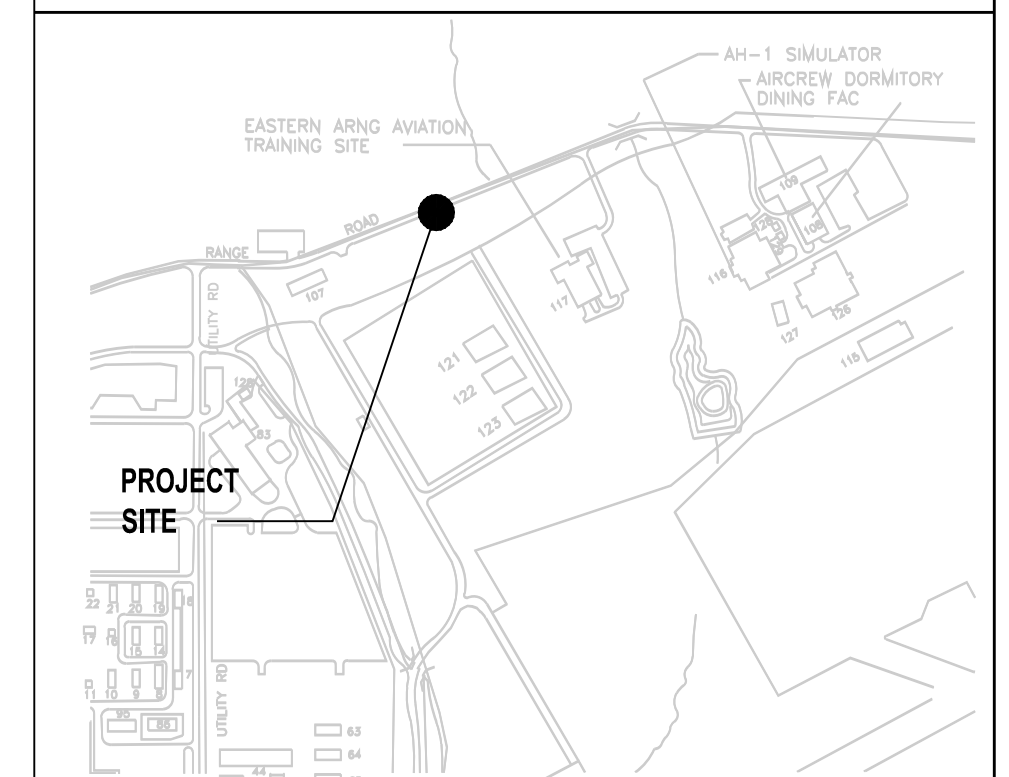
1-800-242-1776



PROJECT LOCATION MAP



VICINITY MAP



CAMPUS / KEY PLAN

NO.	DESCRIPTION	DATE
REVISIONS		

Professional's Signature	Date	Professional's Signature	Date

COMMONWEALTH OF PENNSYLVANIA
DEPT. OF MILITARY & VETERANS' AFFAIRS
ANNVILLE, PENNSYLVANIA 17003

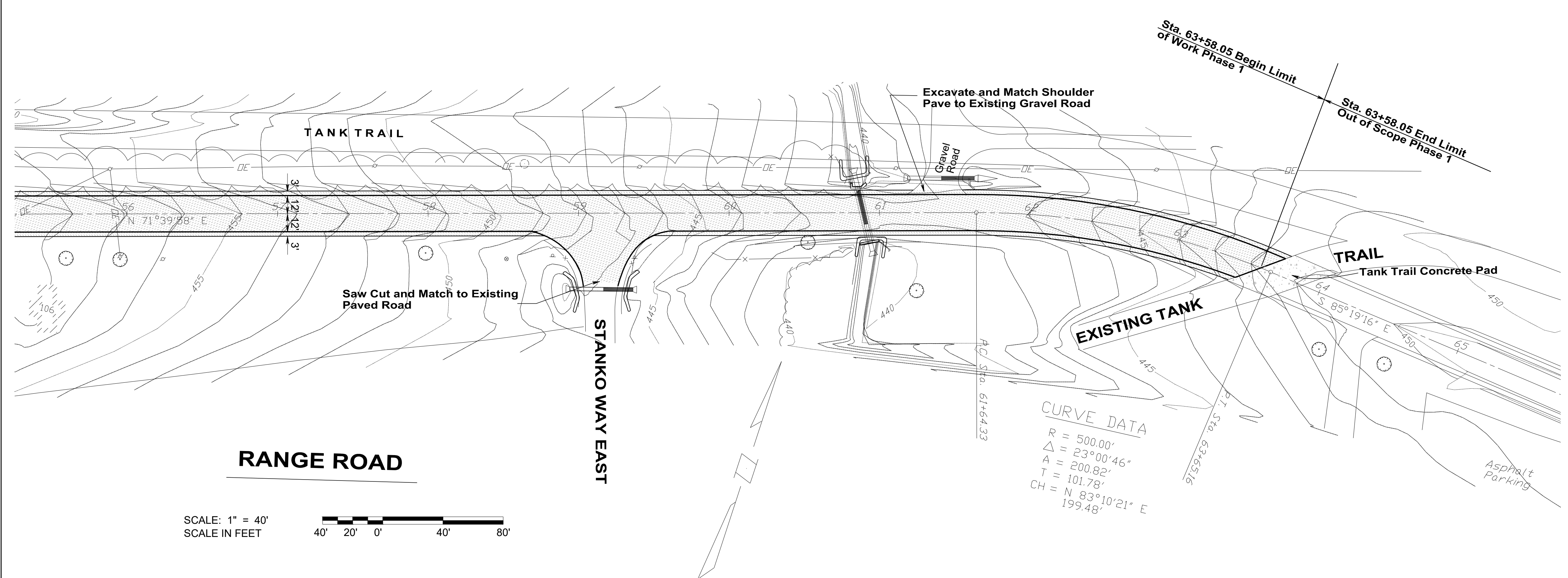
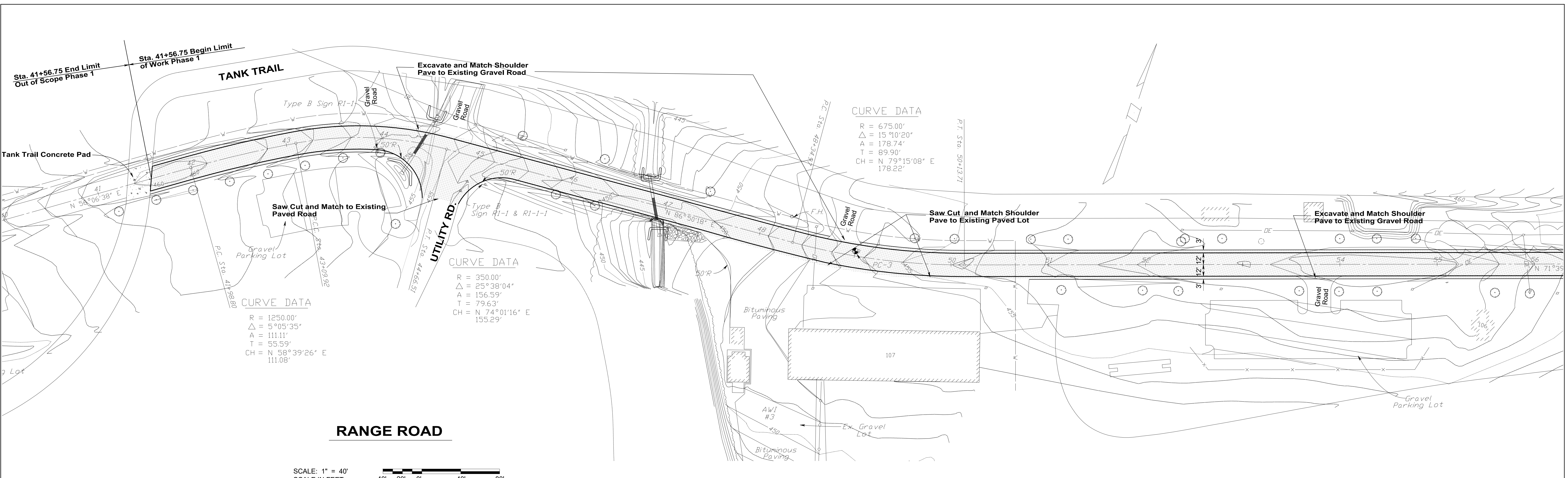
DESIGN PROFESSIONALS:
OFFICE OF FACILITIES AND ENGINEERING
BUREAU OF DESIGN AND PROJECT MANAGEMENT
BLDG. 0-10, FORT INDIANTOWN GAP
ANNVILLE, LEBANON COUNTY, PENNSYLVANIA

PROJECT NO.: 42220144

**RANGE ROAD REPAVING
PHASE 1**
UNION TOWNSHIP
LEBANON COUNTY, PENNSYLVANIA

COVER SHEET

DRAWN BY D. STERNER	DATE 15 MAR 2023	DRAWING NO. G.1.1
CHECKED BY K. LLOYD	SCALE NONE	



SITE / CIVIL LEGEND

EXISTING	PROPOSED	DESCRIPTION
— W —	—	CONTOUR LINE
— DE —	—	WATER LINE
— x —	—	ELECTRIC - OVERHEAD
—	—	FENCELINE
—	—	STORM SEWER
○	○	TREE
○	○	EROSION FILTER SOCK
○	○	WATER VALVE
○	○	UTILITY POLE
○	○	FIRE HAYDRANT
○	○	STORM INLET
○	○	RIP-RAP
□	□	CONCRETE HATCH
□	□	ROAD PAVE HATCH
□	□	SHOULDER HATCH

NO.	DESCRIPTION	DATE

Professional's Signature _____ Date _____

COMMONWEALTH OF PENNSYLVANIA
 DEPT. OF MILITARY & VETERAN'S AFFAIRS
 ANNVILLE, PENNSYLVANIA 17003

DESIGN PROFESSIONALS:
 OFFICE OF FACILITIES AND ENGINEERING
 BUREAU OF DESIGN AND PROJECT MANAGEMENT
 BLDG. 0-10, FORT INDIANTOWN GAP
 ANNVILLE, LEBANON COUNTY, PENNSYLVANIA

PROJECT NO.: 42220144

RANGE ROAD REPAVING PHASE 1
 UNION TOWNSHIP
 LEBANON COUNTY, PENNSYLVANIA

VERIFY SCALE

BAR IS ONE (1) INCH LONG ON ORIGINAL DRAWING:

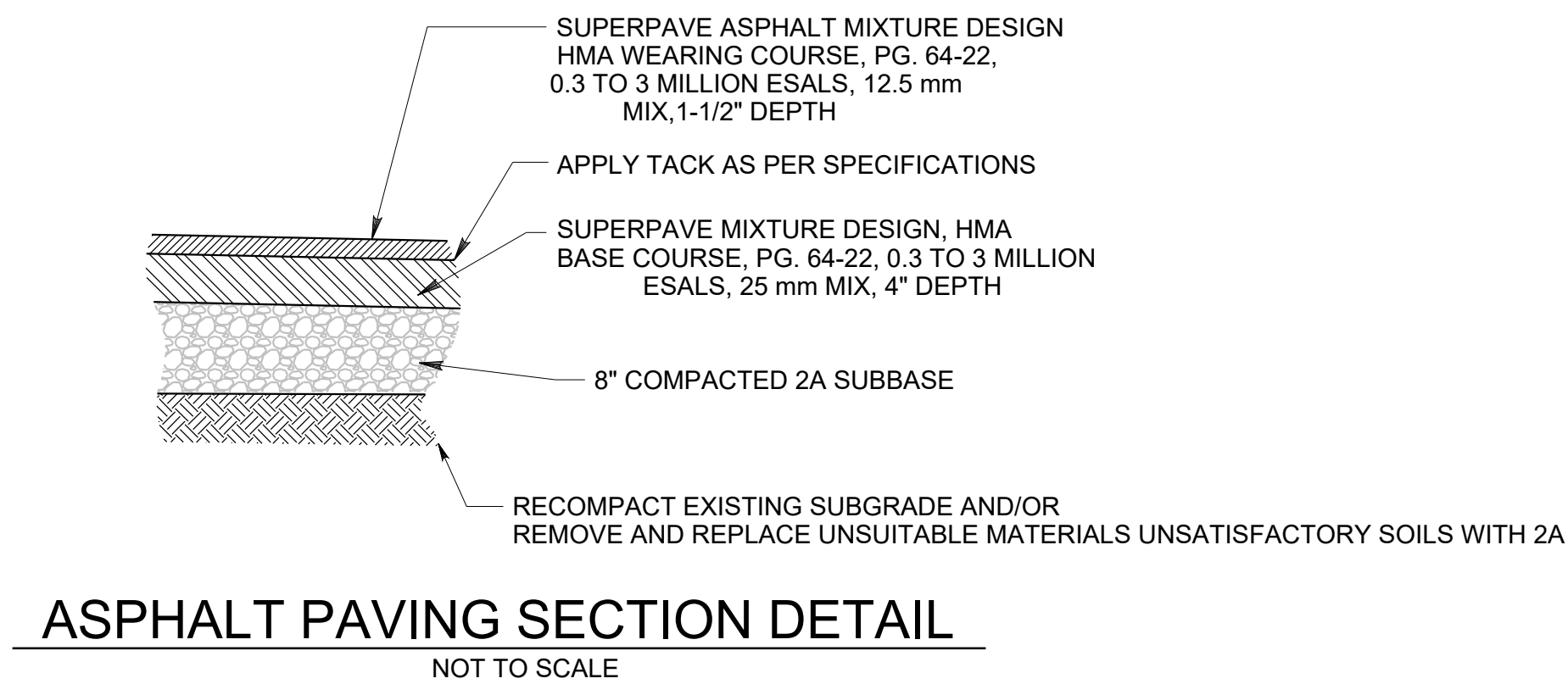
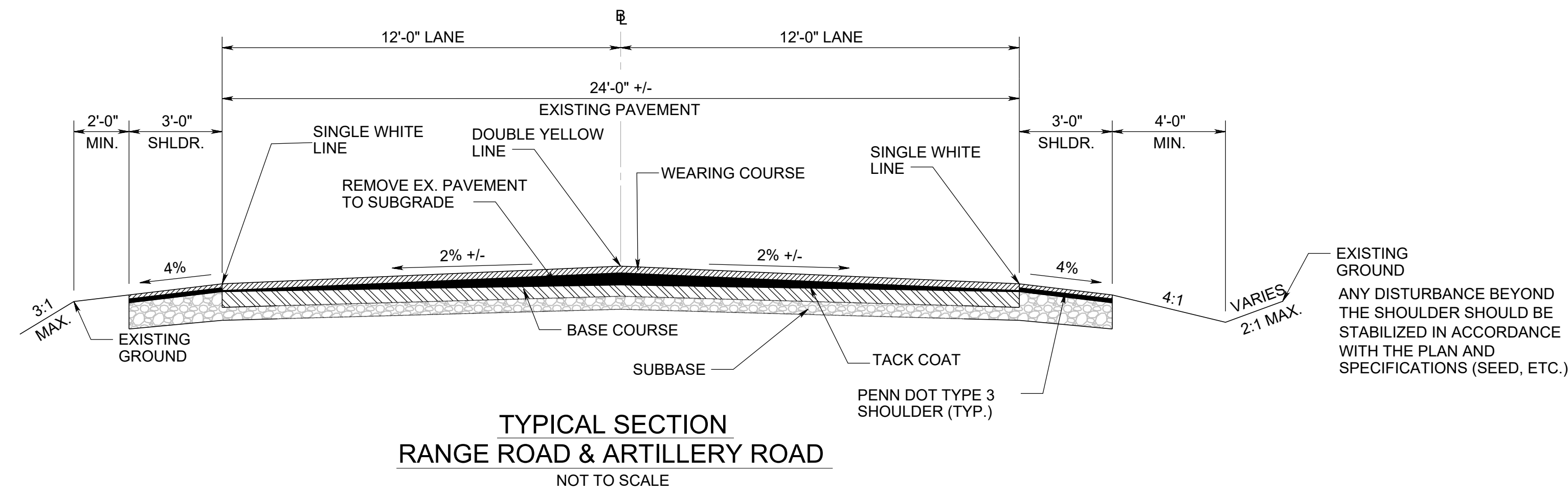
0 1

IF BAR IS NOT ONE (1) INCH LONG, ADJUST SCALE ACCORDINGLY

CONTRACTOR SHALL FIELD VERIFY ALL DIMENSIONS. VARIANCE FROM CONTRACT DOCUMENTS NOT PERMITTED WITHOUT BUREAU OF ENGINEERING AND ARCHITECTURE APPROVAL.

SITE PLAN

DRAWN BY D. STERNER	DATE 15 MAR 2023	DRAWING NO. C.1.0
CHECKED BY K. LLOYD	SCALE 1" = 40'	



Permanent Seeding

Permanent seeding shall take place in all disturbed areas as follows:
Fertilization: The following shall be spread and worked into the topsoil to a depth of 3 to 4 inches.

Agricultural Lime - 275 pounds per 1,000 square feet
 Fertilizer - 25 pounds per 1,000 square feet

The fertilizer shall be a commercial type 10-20-20.

Note: If agricultural lime and fertilizer have been applied previously to the ground where the permanent seed is to be applied, the lime and fertilizer rates shall be reduced by the amount by what has been applied previously.

Permanent Seed Mixture: The following seed mixtures shall be applied as follows:

Formula	Recommended grasses and seeding rates Percentage of mixture	Rate of seeding
*10 to 15 percent turf type ryegrass may be added to these mixtures.		
<i>For athletic areas in southeastern Pennsylvania, south and east of south mountains.</i>		
1. Kentucky bluegrass blend* (3 to 5 varieties)	100	3 lb per 1,000 sq ft
2. Tall fescue	100	10 lb per 1,000 sq ft
<i>For other Pennsylvania areas</i>		
1. Kentucky bluegrass blend* (3 to 5 varieties)	100	3 lb per 1,000 sq ft
2. Kentucky bluegrass (2 or 3 varieties) Fine fescue	40-60 40-60	4 lb per 1,000 sq ft
3. Tall fescue	100	10 lb per 1,000 sq ft
<i>For slopes, banks, cuts, fills in all Pennsylvania areas</i>		
Non-mowed areas:		
1. Pennycik crownvetch Tall fescue or fine fescue or perennial ryegrass	25 75	3 lb per 1,000 sq ft
2. Tall fescue	100	6 lb per 1,000 sq ft
Mowed areas:		

*All mixtures given above are for PLS - Pure Live Seed 100%. To calculate PLS, the percentage of pure seed is multiplied by the percentage of germination, and the product is divided by 100. (85% pure seed x 72% germination) divided by 100 = 61% PLS. To determine how much seed to plant, divide the percentage into 100. Example: 100 divided by 61 = 1.63. Thus, every pound of seed mixture called for should then be 1.63 lbs.

Mulch: Apply mulch to all permanently seeded areas.

Materials: Straw, air-dried and free from undesirable seeds and coarse materials.
Application: 140 pounds per 1,000 square feet.

Final Stabilization and Maintenance

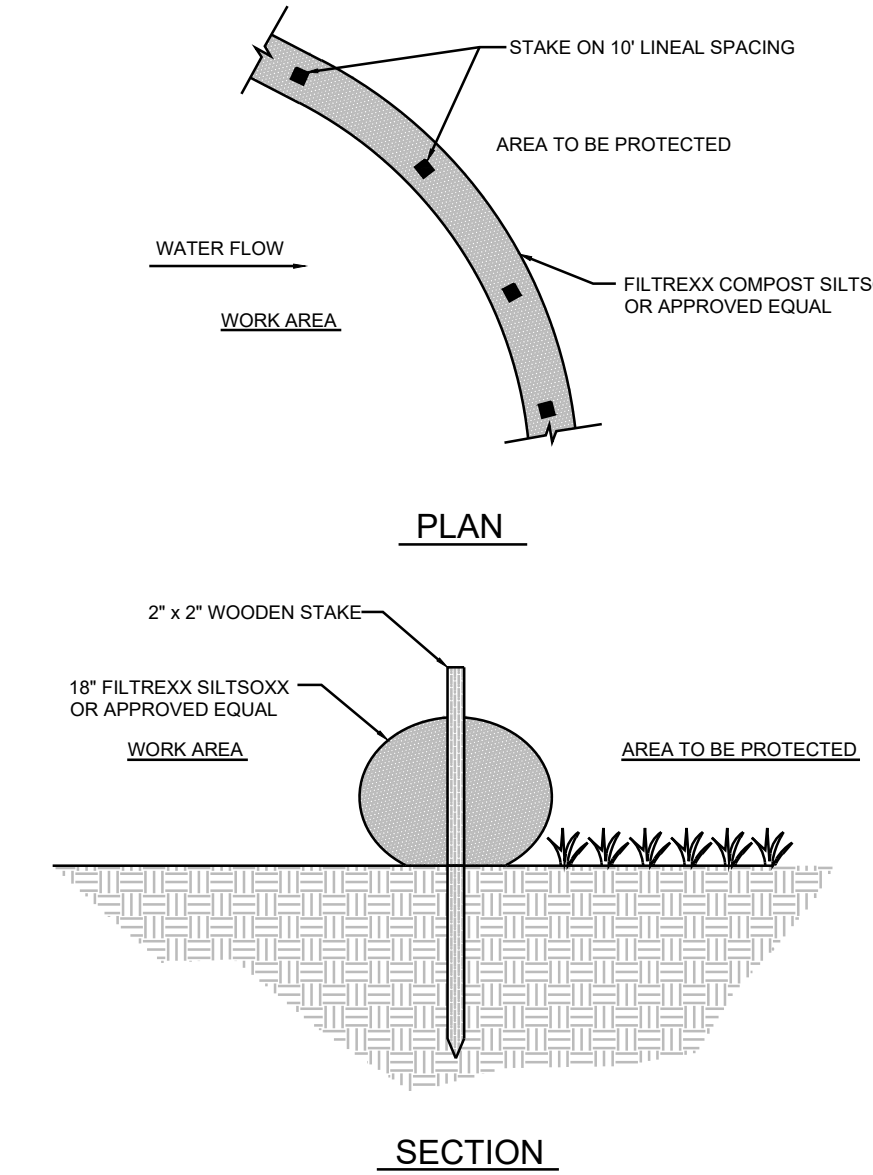
An area shall be considered to have achieved final stabilization when it has a minimum of 70% uniform perennial vegetative cover or other permanent non-vegetative cover with a density sufficient to resist accelerated surface erosion and subsurface characteristics sufficient to resist sliding or other movements.

Revegetation shall occur immediately after completion of the final grading. Should conditions prohibit permanent revegetation efforts, the area will be temporarily stabilized through the use of quick-growing grasses, nylon erosion control mats or similar measures. The Contractor shall be responsible for the permanent stabilization of all areas exposed or disturbed during the Project.

The contractor shall maintain all temporary erosion and sedimentation control facilities in good condition until establishment of ground cover over tributary areas. This will include cleaning and, if required, repair of any filter fabric fence which may become torn, and seeding of eroded areas, as necessary.

Permanent erosion control measures will not require maintenance other than lawn mowing.

Permanent erosion and sedimentation control measures will become the responsibility of the State Reservation Maintenance personnel upon completion of all aspects of the Project.



- MAINTENANCE NOTES:**
1. THE CONTRACTOR SHALL MAINTAIN THE SEDIMENT CONTROL IN A FUNCTIONAL CONDITION AT ALL TIMES AND IT SHALL BE ROUTINELY INSPECTED.
 2. IF THE SEDIMENT CONTROL HAS BEEN DAMAGED, IT SHALL BE REPAIRED, OR REPLACED IF BEYOND REPAIR.
 3. THE CONTRACTOR SHALL REMOVE SEDIMENT AT THE BASE OF THE UP-SLOPE SIDE OF THE SEDIMENT CONTROL WHEN ACCUMULATION HAS REACHED 1/2 OF THE EFFECTIVE HEIGHT OF THE SEDIMENT CONTROL, OR AS DIRECTED BY THE ENGINEER. ALTERNATIVELY, A NEW SEDIMENT CONTROL CAN BE PLACED ON TOP OF AND SLIGHTLY BEHIND THE ORIGINAL ONE CREATING MORE SEDIMENT STORAGE CAPACITY WITHOUT SOIL DISTURBANCE.
 4. SEDIMENT CONTROL SHALL BE MAINTAINED UNTIL DISTURBED AREA ABOVE THE DEVICE HAS BEEN PERMANENTLY STABILIZED AND CONSTRUCTION ACTIVITY HAS CEASED.
 5. THE FILTER MEDIA WILL BE DISPERSED ON SITE ONCE DISTURBED AREA HAS BEEN PERMANENTLY STABILIZED, CONSTRUCTION ACTIVITY HAS CEASED, OR AS DETERMINED BY THE ENGINEER.
 6. FOR LONG-TERM SEDIMENT AND POLLUTION CONTROL APPLICATIONS, SEDIMENT CONTROL CAN BE SEEDED AT THE TIME OF INSTALLATION TO CREATE A VEGETATIVE FILTERING SYSTEM FOR PROLONGED AND INCREASED FILTRATION OF SEDIMENT AND SOLUBLE POLLUTANTS (CONTAINED VEGETATIVE FILTER STRIP). THE APPROPRIATE SEED MIX SHALL BE DETERMINED BY THE ENGINEER.

MAINTENANCE/CONTRACTOR'S RESPONSIBILITIES

1. CONTRACTOR SHALL IMPLEMENT THE EROSION AND SEDIMENT POLLUTION CONTROL FEATURES IN ACCORDANCE WITH THE DRAWINGS AND SPECIFICATIONS.
2. ALL FACILITIES WILL BE INSPECTED AND REPAIRED, IF NECESSARY, AFTER EACH STORM EVENT OR AT A PERIOD NOT TO EXCEED ONE WEEK. SEDIMENT COLLECTED FROM THE EROSION CONTROL STRUCTURES WILL BE PLACED UPSTREAM OF THOSE CONTROLS AND STABILIZED WITH GRAVEL OR RESEEDING.
3. AT NO TIME WILL SEDIMENT BE ALLOWED TO LEAVE THE SITE AND ENTER COMMONWEALTH WATERS.
4. ANY PERMANENTLY SEEDED AREAS THAT BECOME ERODED WILL HAVE THE TOPSOIL REPLACED, THE EROSION CONTROL MATTING REPLACED (IF APPLICABLE), THE GRASS RESOWN AND MULCH REAPPLIED.
5. A COPY OF THIS PLAN MUST BE KEPT AVAILABLE FOR INSPECTION ON THE CONSTRUCTION SITE AT ALL TIMES THROUGHOUT THE TERM OF THE PROJECT.
6. THE INTENT OF THIS PLAN/NARRATIVE IS TO INDICATE GENERAL MEANS OF COMPLIANCE WITH THE REQUIREMENTS OF THE RULES AND REGULATIONS OF CHAPTER 102, THE DEPARTMENT OF ENVIRONMENTAL PROTECTION (AS AUTHORIZED UNDER THE CLEAN STREAMS LAW). IT WILL BE THE RESPONSIBILITY OF THE CONTRACTOR TO IMPLEMENT THESE METHODS, PLUS ADDITIONAL METHODS, AS MAY BE NECESSARY BECAUSE OF CONDITIONS CREATED BY LOCALIZED SITE CONDITIONS AND/OR CONSTRUCTION PROCEDURES IN ORDER TO ASSURE COMPLIANCE WITH APPLICABLE LAW. IT WILL FURTHER BE THE RESPONSIBILITY OF THE CONTRACTOR TO MAINTAIN ALL EROSION AND SEDIMENT CONTROL FACILITIES SO THAT THEY PERFORM AS REQUIRED BY APPLICABLE LAW.
7. FINES AND RELATED COSTS RESULTING FROM THE CONTRACTOR'S FAILURE TO PROVIDE ADEQUATE PROTECTION AGAINST SOIL EROSION AND FOR ANY VIOLATIONS OF THE CLEAN STREAMS LAW AND THE RULES AND REGULATIONS PROMULGATED THEREUNDER SHALL BE BORNE BY THE CONTRACTOR.

NO.	DESCRIPTION	DATE
REVISIONS		

Professional's Signature _____ Date _____

**COMMONWEALTH OF PENNSYLVANIA
DEPT. OF MILITARY & VETERAN'S AFFAIRS
ANNVILLE, PENNSYLVANIA 17003**

DESIGN PROFESSIONALS:
 OFFICE OF FACILITIES AND ENGINEERING
 BUREAU OF DESIGN AND PROJECT MANAGEMENT
 BLDG. 0-10, FORT INDIANTOWN GAP
 ANNVILLE, LEBANON COUNTY, PENNSYLVANIA

PROJECT NO.: 422201144

**RANGE ROAD REPAVING
PHASE 1**
 UNION TOWNSHIP
 LEBANON COUNTY, PENNSYLVANIA

DETAILS

CONTRACTOR SHALL FIELD VERIFY ALL DIMENSIONS. VARIANCE FROM CONTRACT DOCUMENTS NOT PERMITTED WITHOUT BUREAU OF ENGINEERING AND ARCHITECTURE APPROVAL.

DRAWN BY: D. STERNER
 CHECKED BY: K. LLOYD

DATE: 15 MAR 2023
 SCALE: AS NOTED

DRAWING NO.: C.2.0

VERIFY SCALE

BAR IS ONE (1) INCH LONG ON ORIGINAL DRAWING:

0 1

IF BAR IS NOT ONE (1) INCH LONG, ADJUST SCALE ACCORDINGLY